

INSTALLATION GUIDE

JUNO | GLOBAL | Lightolier Track Adapter

IMPORTANT SAFETY INSTRUCTION

When installing or using this track system, basic safety precautions should always be followed, including the following:

1. Turn off power at fuse circuit breaker box before installation or before doing any maintenance work.
2. Wear rubber soled shoes and work on a sturdy wooded or non-conductive ladder.
3. Product must be mounted in location and at height in a manner consistent with its intended use, and in compliance with National Electrical Code and local building codes.
4. For Indoor use only.
5. Do not exceed the nominal supply voltage or amperage ratings.
6. Do not install any lamp holder closer than 6".
7. **WARNING:** Risk of fire. Most dwellings built before 1985 have supply wire rated at 60°C. Consult a qualified electrician before installation.
8. **CAUTION:** To reduce risk of fire and electrical shock, use only fixtures and fittings intended for use with the single or 2-circuit, 120V systems.
9. The track and all components are rated for 120V, 20A capacity. (2400W max)
10. Do not exceed the nominal supply voltage or amperage rating.
11. To avoid hazard to children, account for all parts and properly dispose of all packing materials.
12. Read all instructions
13. Do not install this track in damp or wet locations.
14. Do not cut any track sections.
15. Do not install any part of a track system less than 5 feet above the floor.
16. Do not install any luminaire assembly closer than 6 inches from any curtain, or similar combustible material.
17. Disconnect electrical power before adding to or changing the configuration of the track.
18. Do not attempt to energize anything other than lighting track luminaires on the track. To reduce the risk of fire and electric shock, do not attempt to connect power tools, extension cords, appliances, and the like to the track.
19. Do not connect a track to more than one branch circuit unless the track is constructed so that it can be used with more than one branch circuit. Check with a qualified electrician. Although the track lighting system may seem to operate acceptably, a dangerous overload of the neutral may occur and result in a risk of fire.

SAVE THESE INSTRUCTIONS

For future reference when adding fixtures or changing the track configuration.



BEFORE YOU BEGIN

Read these instructions completely and carefully.

FOR USE WITH CEILING MOUNTED TRACK ONLY.
READ TRACK MANUFACTURER'S INSTALLATION
INSTRUCTIONS FOR GUIDELINES ON TRACK
INSTALLATION.



WARNING

RISK OF ELECTRIC SHOCK

Turn power off before inspection, installation or removal.



CAUTION

To reduce risk of fire and electric shock, refer to track luminaire markings for system compatibility and use only with the following:

Global: GES series track system

Lightolier: Lytespan Series

Juno: R, T, or TU track systems

Fixture intended for commercial use only. Use only in non-insulated applications.



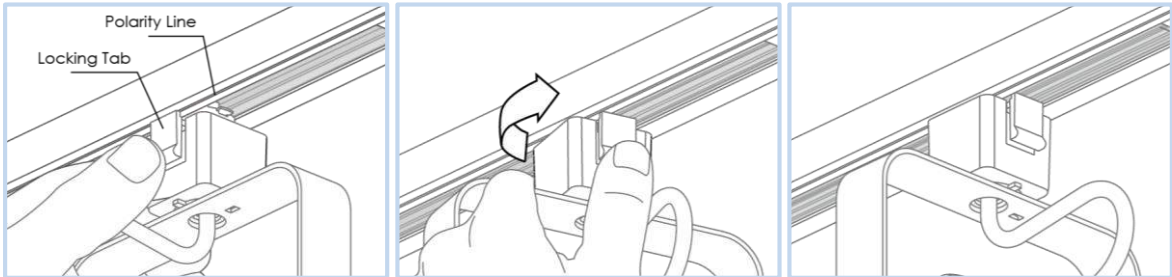
WESTPORT

www.westport.com.tw

All rights reserved @ Westport International Co., Ltd. 2018

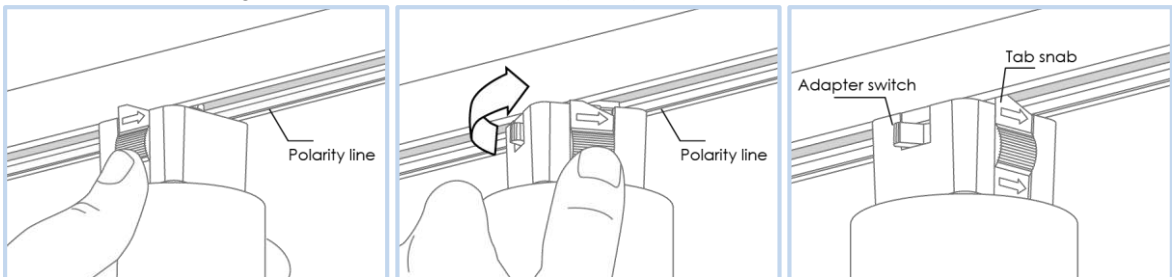
INSTALLATION - GLOBAL

1. Hold the adapter below the track with your thumb on the locking tab. Make sure the locking tab is positioned directly below the polarity line. Push adapter into track.
2. Rotate adapter 90° clockwise, making sure the polarity lines match between the track and the fixture adapter.
3. Release the locking tab and the fixture should snap into position.



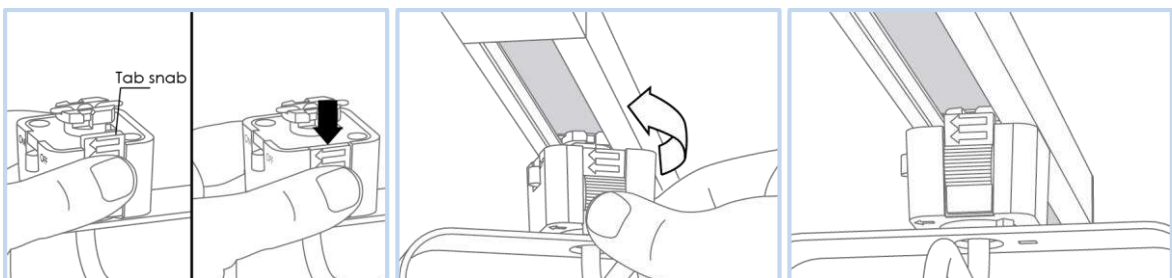
INSTALLATION - Lightolier

1. Hold the adapter below the track with your thumb on the locking tab. Make sure the locking tab is positioned directly below the polarity line. Push adapter into track.
2. Rotate adapter 1/4 turn (90°) counter-clockwise.
3. Release the locking tab and the fixture should snap into position. Turn the fixture on by the switch.



INSTALLATION - JUNO

1. Pull tab down.
2. Insert adapter into track and rotate clockwise 90 degrees until arrows on tab point to polarity line on track. **NOTE:** Forcing the adapter to rotate anti-clockwise may damage and prevent fixture from turning on.
3. Release the locking tab and the fixture should snap into position.



This device complies with Part 15 of the FCC Rules. Operation is subject to the following two conditions: (1) This device may not cause harmful interference, and (2) this device must accept any interference received, including interference that may cause undesired operation. CAN ICES-005 (A) /NMB-005 (A)

Note: This equipment has been tested and found to comply with the limits for a Class A digital device, pursuant to part 15 of the FCC Rules. These limits are designed to provide reasonable protection against harmful interference when the equipment is operated in a commercial environment. This equipment generates, uses, and can radiate radio frequency energy and, if not installed and used in accordance with the instruction manual, may cause harmful interference to radio communications. Operation of this equipment in a residential area is likely to cause harmful interference in which case the user will be required to correct the interference at his own expense.